

Notice of Race: 2022 Figure 8 (Bainbridge - Vashon)

Presented by the Port Madison Yacht Club

June 18-19th, 2022

NOTICE OF RACE

RULES: This event will be governed by this Notice of Race, the Sailing Instructions, the rules as defined in The Racing Rules of Sailing 2021 - 2024, and the Pacific Handicap Racing Fleet of the Northwest (PHRF-NW). Where there is a conflict this Notice of Race and the Sailing Instructions shall take precedence.

All vessels are required to follow "International Regulations for Preventing Collisions at Sea" "COLREGs" "Rules of the road".

A boat that impedes or obstructs commercial traffic will be disqualified.

All vessels shall carry the equipment required by law.

REQUIREMENTS:

Boats must have a PHRF NW rating of 200 or less.

Boats' mast height must be under 75 feet.

Android or Apple phone with the ability to download Kwindoo App. Cell phone with data plan for fleet tracking, Ability to keep phone charged and on. *Data usage and rates may apply.

Ability to navigate underway at night, Working Navigation Lights are required.

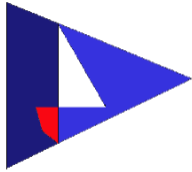
PMYC recommends all vessels should follow ORC Category 4 Requirements.

PMYC strongly recommends that all crew on deck be equipped with a Personal Location Light (Personal marine strobe light) Or PLB (Personal Locator Beacon) between dusk and dawn.

ELIGIBILITY AND ENTRY: The regatta is open to Sailboats with PHRF NW rating of 200 or less and under 75 feet of air draft. Night navigation and Distance racing experience is required.

REGISTRATION: A fifteen (15) Boat limit is applied to this race.

Entry deadline is June 16th 2022 at 23:59



Boats may enter by completing online registration on the PMYC Website under Racing Calendar or homepage under "Figure 8" <https://portmadisonyachtclub.wildapricot.org/> Online registration required for organizational.

MEASUREMENTS: Boats must be able to produce a valid PHRF -NW certificate

FEES: \$40

DATES OF COMPETITION: June 18 - 19th 2022

START SEQUENCE: June 18h 08:55, One class, one start

START: June 18h 09:00. In area between agate pass bridge and 1 mile south of agate pass bridge. The start line is unmonitored by a RC and is virtual. Boat over early will not count and Kwindoo will notify users of course progress.

THE COURSE: Race start line is in the area just south of Agate Passage. Proceed South to Rich passage. Vessels need to make the tide window at Rich passage by 15:30. Once through Rich Passage fleet will head south to Blake Island rounding either side of Blake Island. Continue to East side of Vashon Island (Clockwise around Vashon Island). Fleet will continue to Robinson Point rounding, then heading to Dalco Passage. After getting to Dalco Point will head north and head up Colvos Passage. After getting to Point Vashon (North end) will continue around Blake (either side) to the east side of Bainbridge (Counterclockwise). Round Point Monroe to finish. 53 Nmi

Bainbridge always stays on Port side!
Vashon always stays on Starboard side!

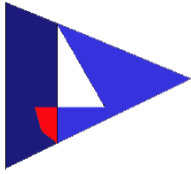
Competitors may use engine in the event of grounding, Man overboard, to assist another vessel, and in emergency to clear Commercial traffic. Any distance gained will be offset by time lost. As per US Sailing Rules

TIME LIMIT: Sunday 15:00 (30H)


PROTESTS: Please don't.

SCORING: PHRF Time on Distance (TOD)

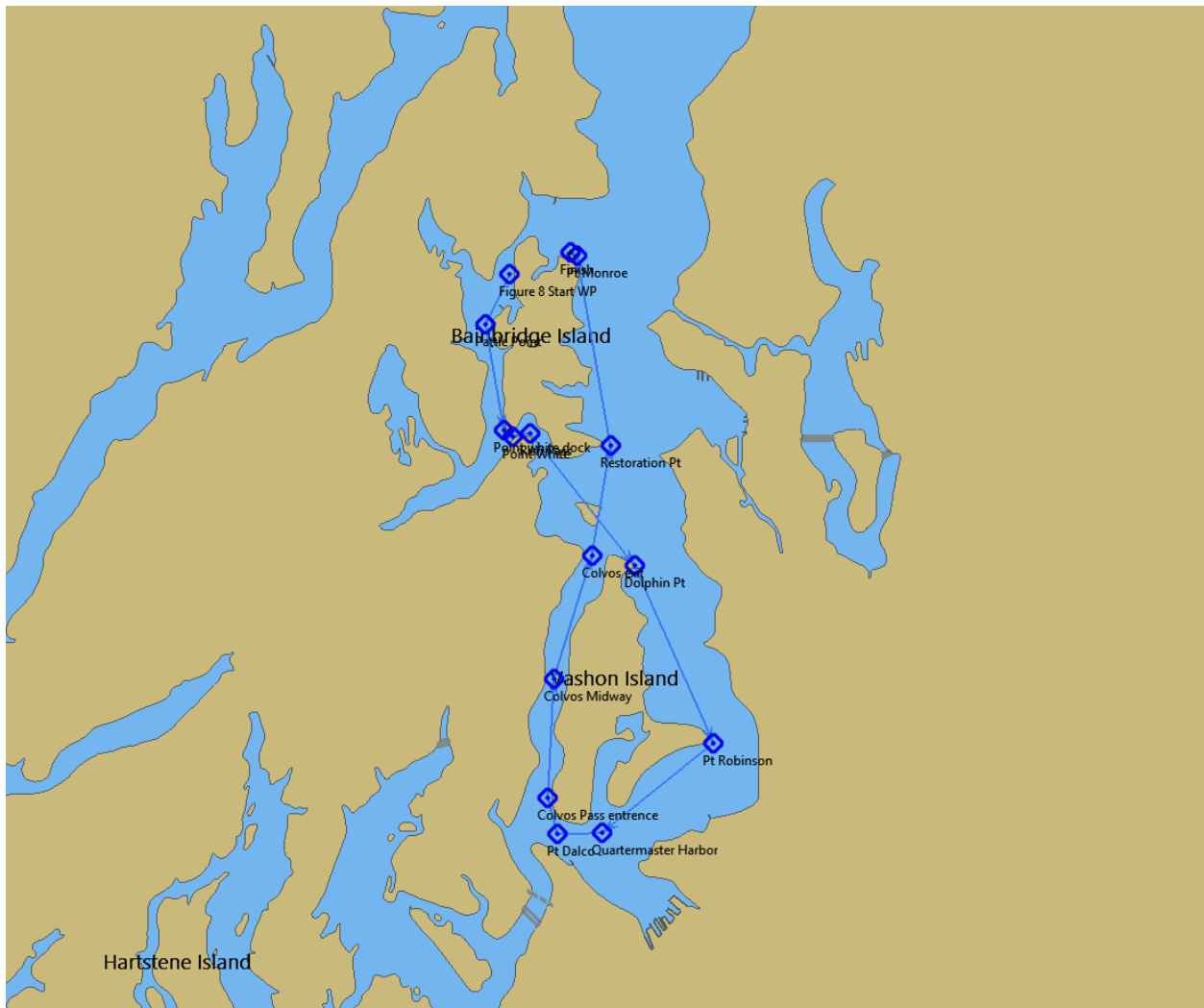
RADIO COMMUNICATIONS: VHF channel 16 should be monitored, Ch. 72 should be monitored and used for communications.

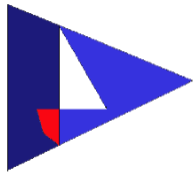


SAILING INSTRUCTIONS: (Si) Will be emailed and posted on Figure 8 page the day (Friday, June 17th) before the start date.

KWINDOO: Each vessel must use "Kwindoo Tracking"  (Free app) Be aware there are different 3 Kwindoo apps.! Must have a internet connection and have ability to keep phone charged while racing. Make sure phone is not in power saving mode and allow app to run in background to making sure tracking is accurate.

SUPPORT PERSON VESSELS: There is no Race committee boat on the course and this is a Self-supported race.





***Not to be used for navigation**

DISCLAIMER: By registering and participating in This Event you agree to these terms between "The Port Madison Yacht Club" OR "PMYC", and the registered attendee(s) and/or participant(s). If you are registering on behalf of another it is your responsibility to ensure that the person attending is aware of these terms and accepts them, and by completing the registration you are warranting that you have made the attendee(s) aware of these terms and that they have accepted these terms.

Competitors participate entirely at their own risk. The organizing authority will not accept any liability for material damage, personal injury or death sustained in conjunction with or prior to, during, or after this event. Vessels shall comply with USCG safety regulations and should be prepared to sail in heavy wind, after dark, in the presence of both commercial and naval warfare traffic, and in the presence of large marine mammals (stay away from whales, RCW 77.15.740). Competitors are recommended to wear PFD's. An operating VHF is recommended. An auxiliary motor is recommended.